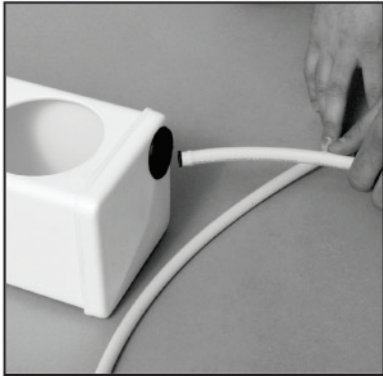
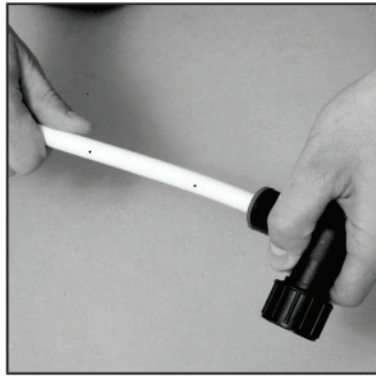


Laser Spray Line Installation



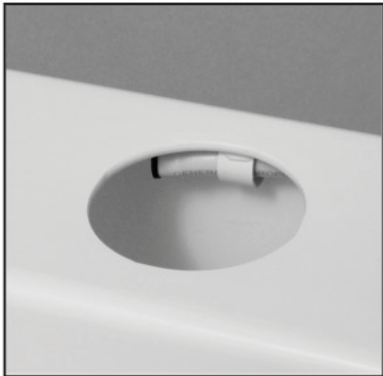
Step 1

Hold the black elbow in one hand and grab the laser spray line in the other. Rotate the beige spray line so that the outlet holes will spray into the chamber at a 45 degree angle.



Step 2

Insert plugged end of the laser spray line into the 1" grommet at the end of the square grow chamber. Feed the line into the chamber.



Step 3

Guide laser spray line through the hanger clips at the top corner of chamber. The laser spray line should hang loosely in the hanger Clips.



Step 4

Insert the black elbow into the 1" grommet so that it seats completely and the outside portion points down. Check once more to make sure the outlet holes are facing 45 degrees into the grow chamber. Your laser spray line is now properly installed.